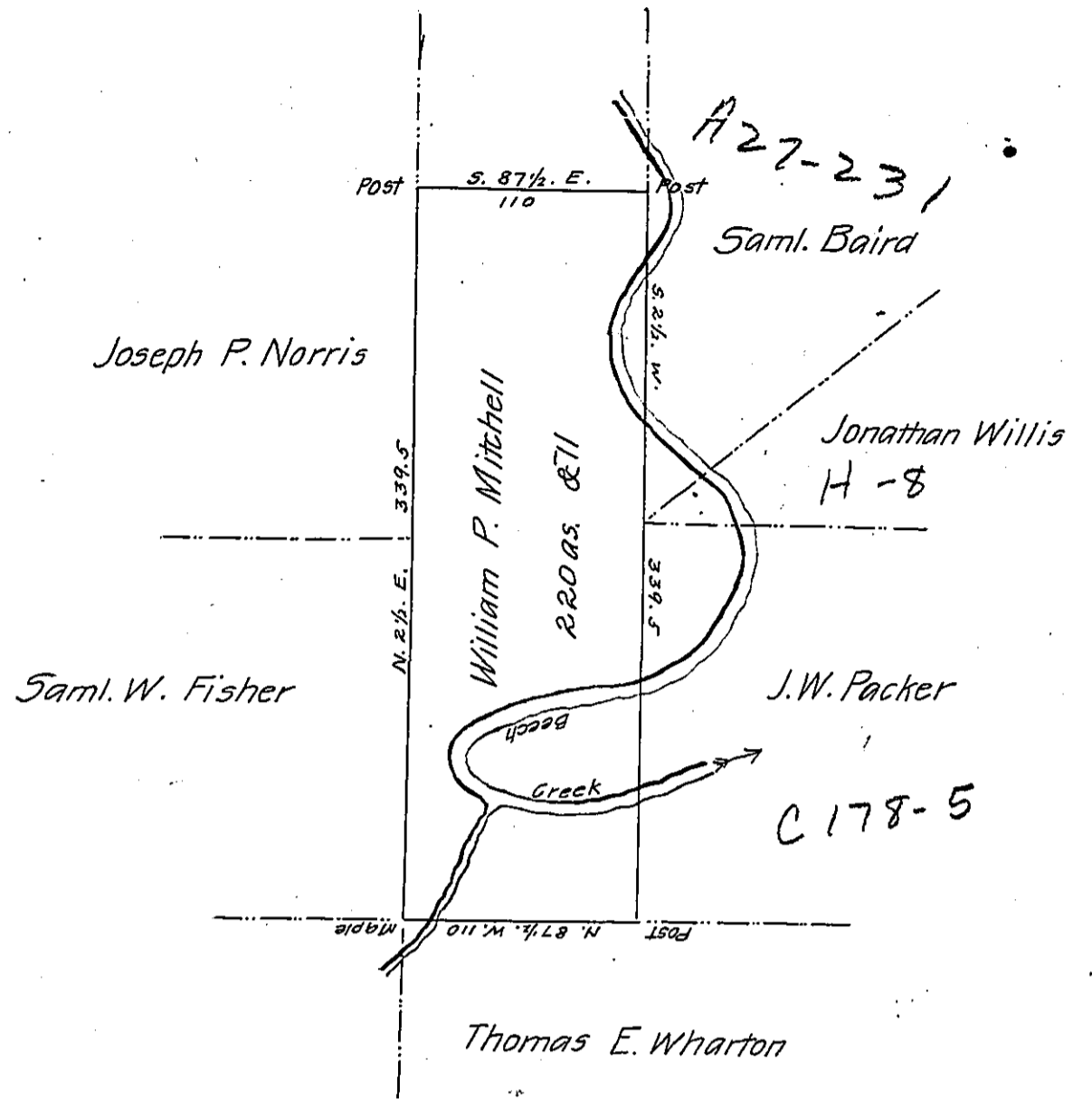


FORM NO. 1.



A tract of land situated in Curtin township Centre County, Containing two hundred and twenty acres and the Allowance &c. Surveyed the 10th day of August 1866. On a Warrant granted to William P. Mitchell Dated the 8<sup>th</sup> day of January 1866.

Henry P. Treziulny  
County Surveyor

To J. M. Campbell Esqr. }  
Surveyor General }

IN TESTIMONY that the above is a copy of the original remaining on file in the Department of Internal Affairs of Pennsylvania, made conformably to an Act of Assembly approved the 16th day of February, 1833, I have hereunto set my Hand and caused the Seal of said Department to be affixed at Harrisburg, this tenth day of March 1906

*Laac P Brown*  
Secretary of Internal Affairs.